

# VILLAGGIO ISLES-PHASE I

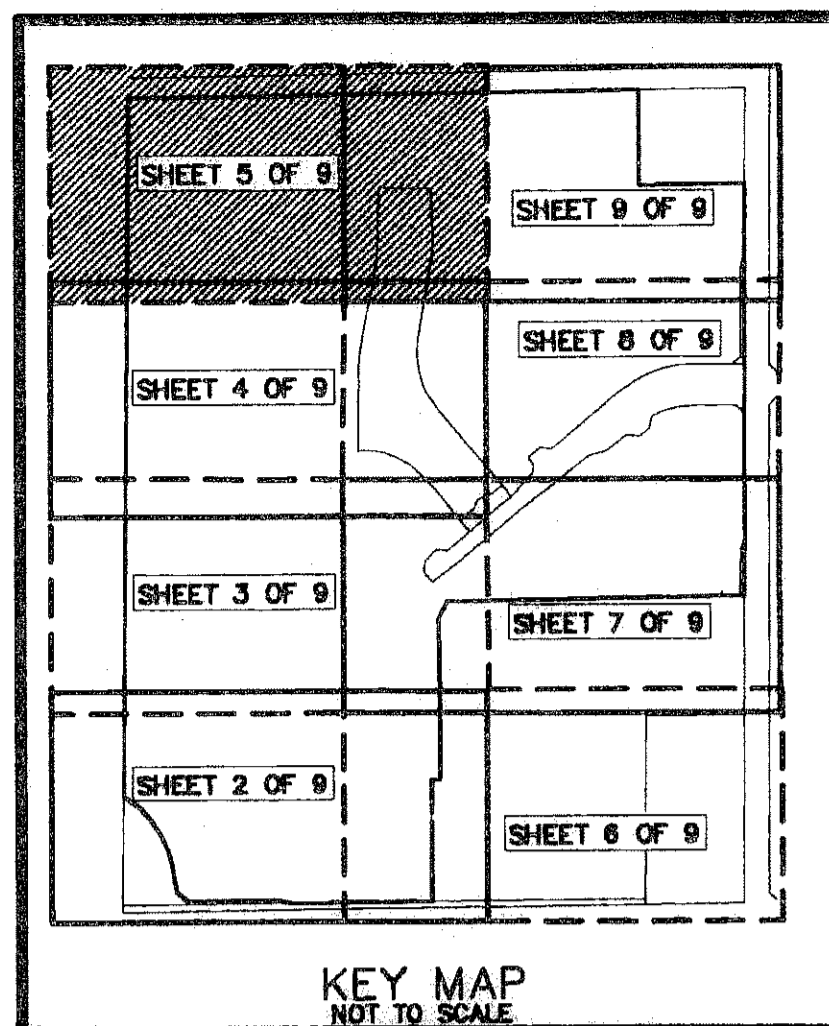
TERRANOVA PUD, A PLANNED UNIT DEVELOPMENT  
BEING A PORTION OF THE SOUTHWEST 1/4 OF SECTION 16, TOWNSHIP 46 SOUTH, RANGE 42 EAST, TOGETHER WITH  
A REPLAT OF A PORTION OF THE PLAT OF SUBDIVISION OF S.E. 1/4 AND W. 1/2 OF SECTION 16 TOWNSHIP 46S RANGE 42E,  
AS RECORDED PLAT BOOK 1, PAGE 158 OF THE PUBLIC RECORDS OF PALM BEACH COUNTY, FLORIDA

THIS INSTRUMENT PREPARED BY  
DAVID P. LINDLEY  
OF  
**CAULFIELD and WHEELER, INC.**  
SURVEYORS - ENGINEERS - PLANNERS  
7301-A WEST PALMETTO PARK ROAD, SUITE 100A  
BOCA RATON, FLORIDA 33433 - (561)392-1991  
FEBRUARY - 2008

P.R.M.	NORTHING	EASTING
1	771561.50	928395.99
2	771572.96	928345.86
3	771569.92	928065.87
4	771599.19	928030.96
5	771675.24	928018.35
6	771907.75	927863.40
7	773028.30	927874.75
8	774148.84	927886.10
9	774160.22	928699.31
10	774171.61	929512.53
11	773863.87	929511.20
12	773868.06	929849.43
13	773135.89	929846.28
14	772555.85	929843.78
15	772538.64	928895.67
16	772481.99	928870.15
17	771959.78	928871.00
18	771959.74	928844.98
19	771566.37	928845.63

**NOTES**  
**COORDINATES, BEARINGS AND DISTANCES**  
COORDINATES SHOWN ARE GRID  
DATUM = NAD 83 1990 ADJUSTMENT  
ZONE = FLORIDA EAST  
LINEAR UNIT = US SURVEY FEET  
COORDINATE SYSTEM 1983 STATE PLANE  
TRANSVERSE MERCATOR PROJECTION  
ALL DISTANCES ARE GROUND  
SCALE FACTOR = 1.0000265  
GROUND DISTANCE X SCALE FACTOR = GRID DISTANCE  
BEARINGS AS SHOWN HEREON ARE GRID DATUM,  
NAD 83 1990 ADJUSTMENT, FLORIDA EAST ZONE.

STATE OF FLORIDA  
COUNTY OF PALM BEACH  
THIS PLAT WAS FILED FOR  
RECORD AT \_\_\_\_\_ M.  
THIS \_\_\_\_\_ DAY OF \_\_\_\_\_  
A.D. 2008 AND DULY RECORDED  
IN PLAT BOOK \_\_\_\_\_ ON  
PAGES \_\_\_\_\_ AND \_\_\_\_\_  
SHARON R. BOCK  
CLERK AND COMPTROLLER  
BY: \_\_\_\_\_  
DEPUTY CLERK



0930.002

